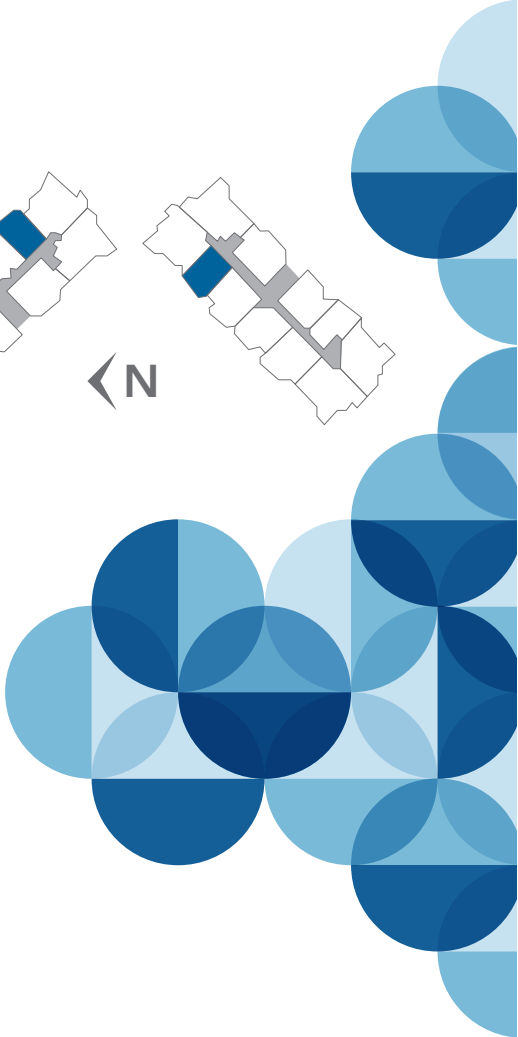
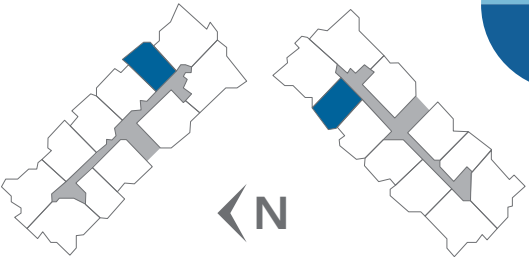
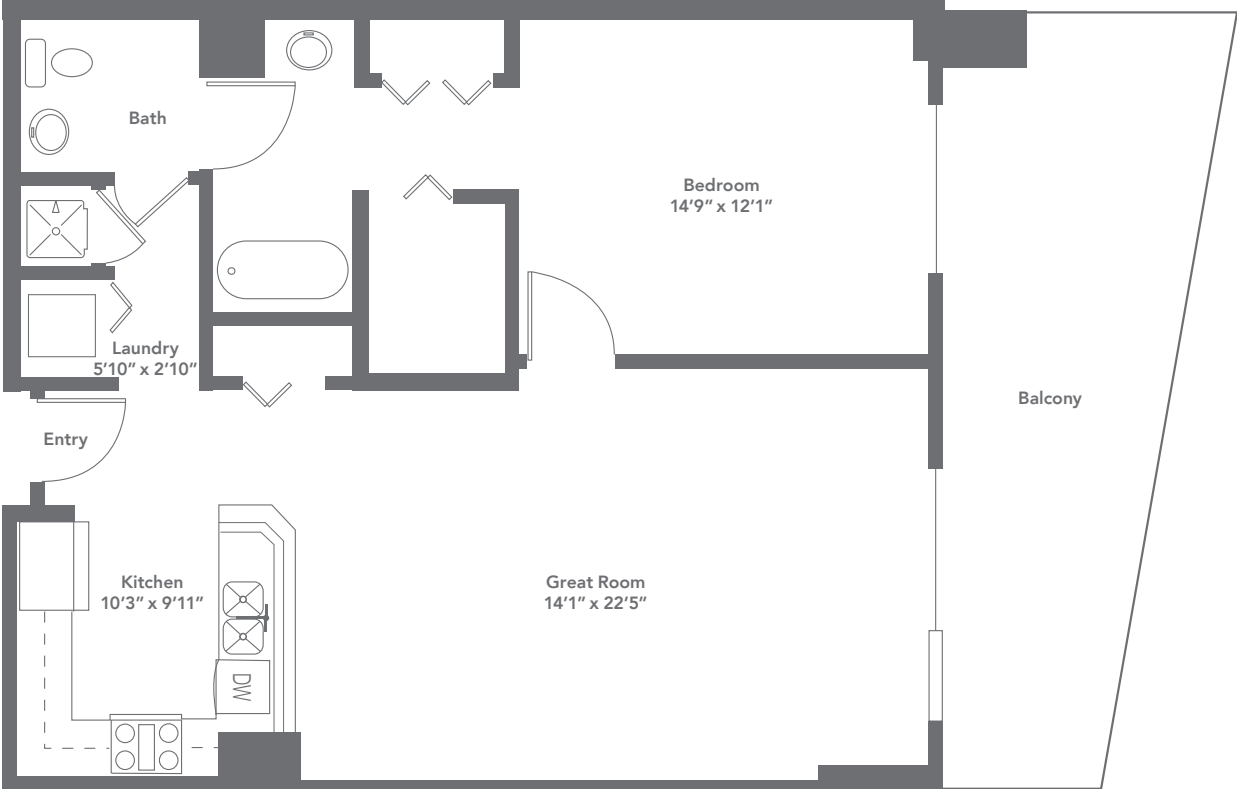


# BRISTOL RANGE

PLAN 10 // 1 BEDROOM // 1 BATH // 861 SQ FT



Notes:

Actual floor plan layout and square footage may vary. Floor plan is subject to change without notice and is for presentation purposes only as it is not to scale. All dimensions and square footage is approximate and may vary due to uniqueness of the building design and configuration and no representation is made as the accuracy of such figures. A DK Las Vegas LLC Community. NORTHCAP